

McBriar Ave between Quadra St and Morris Dr

October 28, 2019 To November 01, 2019



The data presented here is for information purposes only and should not be considered authoritative for construction, geotechnical, engineering, navigational, legal, or other site-specific uses. The information shared is owned by the Transportation Division of the Engineering Department at the District of Saanich. Accuracy is not guaranteed.

Start Date: 28-Oct-19
 Start Time: 0:16
 Station ID: R0737-02

Location 1: McBriar Ave between Quadra St and Morris Dr

Note:

DATE:	October 28, 2019		October 29, 2019		October 30, 2019		October 31, 2019		November 1, 2019		WK AVG		WK AVG	HOURLY
	MON		TUE		WED		THURS		FRI		EB	WB	CH 1+2	%
Time:	EB	WB	EB	WB	EB	WB	EB	WB	EB	WB	EB	WB		
12-1 AM			1	2	3	2	1	1			2	2	3	0.3%
1-2 AM			0	0	0	0	3	0			1	0	1	0.1%
2-3 AM			0	0	1	2	1	2			1	1	2	0.2%
3-4 AM			1	2	0	0	1	0			1	1	1	0.1%
4-5 AM			1	0	0	3	1	0			1	1	2	0.1%
5-6 AM			4	8	4	7	2	6			3	7	10	0.9%
6-7 AM			10	15	7	16	7	20			8	17	25	2.1%
7-8 AM			22	39	19	24	27	37			23	33	56	4.7%
8-9 AM			72	51	83	57	88	48			81	52	133	11.1%
9-10 AM			31	29	23	37	30	49			28	38	66	5.6%
10-11 AM			31	26	29	31	29	43			30	33	63	5.3%
11-12 PM			32	26	34	40	28	28			31	31	63	5.3%
12-1 PM			27	21	40	35	33	33			33	30	63	5.3%
1-2 PM			36	26	42	33	38	28			39	29	68	5.7%
2-3 PM			57	43	66	38	53	37			59	39	98	8.2%
3-4 PM			66	54	51	49	49	54			55	52	108	9.0%
4-5 PM			52	53	60	47	51	58			54	53	107	9.0%
5-6 PM			55	42	57	43	73	30			62	38	100	8.4%
6-7 PM			37	32	39	37	25	19			34	29	63	5.3%
7-8 PM			35	25	32	33	20	33			29	30	59	5.0%
8-9 PM			24	19	16	12	25	33			22	21	43	3.6%
9-10 PM			10	18	15	20	17	20			14	19	33	2.8%
10-11 PM			5	8	5	8	12	12			7	9	17	1.4%
11-12 AM			5	1	7	7	2	5			5	4	9	0.8%
LANES			614	540	633	581	616	596			621	572	1193	100.0%
TOTAL			1154		1214		1212				1200			
	MON		TUE		WED		THURS		FRI		WK AVG			

PEAK HOUR					TOTAL VEHICALS-PEAK PERIODS		2 HOUR PEAK INTERVALS				
MAX. 7 - 9 am PEAK HOUR	133	⇒	11.1%	between 8-9 AM	522	⇒	6 HR TOTAL	2 HR AM (7 - 9 AM)			
MAX. 7 - 11 am PEAK HOUR	133	⇒	11.1%	between 8-9 AM	396	⇒	4 HR TOTAL	VEH / HR	VEH / 2HR	2 HR %	
MAX. 11 am - 1 pm PEAK HOUR	63	⇒	5.3%	between 12-1 PM				7-8 AM	56	189	15.8%
MAX. 11 am - 3 pm PEAK HOUR	98	⇒	8.2%	between 2-3 PM				8-9 AM	133		
MAX. 4 - 6 pm PEAK HOUR	107	⇒	9.0%	between 4-5 PM			24 HOUR FACTORS	2 HR NOON (11 - 1 PM)			
MAX. 3 - 6 pm PEAK HOUR	108	⇒	9.0%	between 3-4 PM	2.29	⇒	6-24 HR FACT.	VEH / HR	VEH / 2HR	2 HR %	
					3.01	⇒	4-24 HR FACT.	11-12 PM	63	126	10.5%
								12-1 PM	63		
								2 HR PM (4 - 6 PM)			
								VEH / HR	VEH / 2HR	2 HR %	
								4-5 PM	107	207	17.3%
								5-6 PM	100		

McBriar Ave between Quadra St and Morris Dr

Westbound

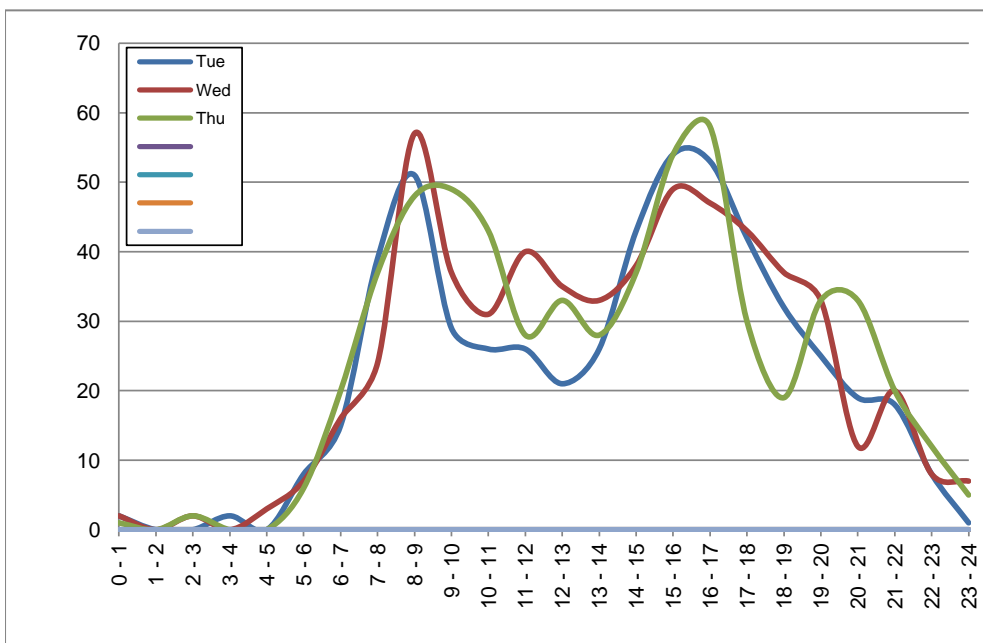
October 29, 2019 to October 31, 2019

Hourly Volumes

Time Period	Tue	Wed	Thu				
	Oct 29	Oct 30	Oct 31				
0 - 1	2	2	1				
1 - 2	0	0	0				
2 - 3	0	2	2				
3 - 4	2	0	0				
4 - 5	0	3	0				
5 - 6	8	7	6				
6 - 7	15	16	20				
7 - 8	39	24	37				
8 - 9	51	57	48				
9 - 10	29	37	49				
10 - 11	26	31	43				
11 - 12	26	40	28				
12 - 13	21	35	33				
13 - 14	26	33	28				
14 - 15	43	38	37				
15 - 16	54	49	54				
16 - 17	53	47	58				
17 - 18	42	43	30				
18 - 19	32	37	19				
19 - 20	25	33	33				
20 - 21	19	12	33				
21 - 22	18	20	20				
22 - 23	8	8	12				
23 - 24	1	7	5				
Day Total	540	581	596				

15-Minute Volumes

Time Start	Tue	Wed	Thu				
	Oct 29	Oct 30	Oct 31				
0:00	0	0	1				
0:15	1	0	0				
0:30	0	1	0				
0:45	1	1	0				
1:00	0	0	0				
1:15	0	0	0				
1:30	0	0	0				
1:45	0	0	0				
2:00	0	0	0				
2:15	0	0	2				
2:30	0	2	0				
2:45	0	0	0				
3:00	0	0	0				
3:15	0	0	0				
3:30	2	0	0				
3:45	0	0	0				
4:00	0	1	0				
4:15	0	1	0				
4:30	0	1	0				
4:45	0	0	0				
5:00	3	1	3				
5:15	1	2	0				
5:30	2	3	2				
5:45	2	1	1				
6:00	3	3	6				
6:15	5	3	2				
6:30	0	5	7				
6:45	7	5	5				
7:00	10	6	8				
7:15	6	3	8				
7:30	6	6	6				
7:45	17	9	15				
8:00	12	11	11				
8:15	18	20	11				
8:30	15	16	15				
8:45	6	10	11				
9:00	7	10	18				
9:15	5	10	14				
9:30	8	8	9				
9:45	9	9	8				
10:00	4	8	9				
10:15	11	7	16				
10:30	6	11	9				
10:45	5	5	9				
11:00	11	8	6				
11:15	5	9	10				
11:30	9	10	6				
11:45	1	13	6				
12:00	4	5	6				
12:15	3	5	12				
12:30	3	13	10				
12:45	11	12	5				
13:00	4	8	10				
13:15	7	8	5				
13:30	10	11	6				
13:45	5	6	7				
14:00	11	9	8				
14:15	19	12	9				
14:30	9	7	10				
14:45	4	10	10				
15:00	3	18	9				
15:15	14	9	17				
15:30	17	13	15				
15:45	20	9	13				
16:00	10	15	14				
16:15	15	12	10				
16:30	11	16	22				
16:45	17	4	12				
17:00	14	13	6				
17:15	8	13	14				
17:30	8	10	8				
17:45	12	7	2				
18:00	7	13	3				
18:15	10	8	7				
18:30	8	7	4				
18:45	7	9	5				
19:00	8	11	3				
19:15	7	7	10				
19:30	5	8	16				
19:45	5	7	4				
20:00	10	7	12				
20:15	4	0	9				
20:30	4	4	9				
20:45	1	1	3				
21:00	7	6	6				
21:15	3	5	1				
21:30	4	9	6				
21:45	4	0	7				
22:00	1	2	5				
22:15	3	5	4				
22:30	2	0	0				
22:45	2	1	3				
23:00	0	2	2				
23:15	0	1	0				
23:30	0	3	2				
23:45	1	1	1				



Site notes:

McBriar Ave between Quadra St and Morris Dr

Eastbound

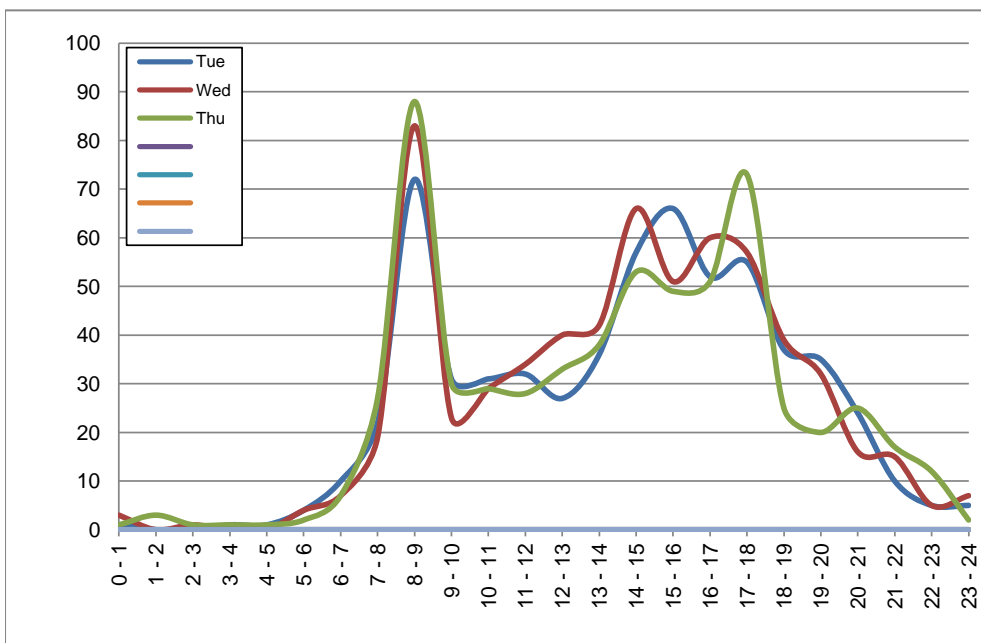
October 29, 2019 to October 31, 2019

Hourly Volumes

Time Period	Tue	Wed	Thu				
	Oct 29	Oct 30	Oct 31				
0 - 1	1	3	1				
1 - 2	0	0	3				
2 - 3	0	1	1				
3 - 4	1	0	1				
4 - 5	1	0	1				
5 - 6	4	4	2				
6 - 7	10	7	7				
7 - 8	22	19	27				
8 - 9	72	83	88				
9 - 10	31	23	30				
10 - 11	31	29	29				
11 - 12	32	34	28				
12 - 13	27	40	33				
13 - 14	36	42	38				
14 - 15	57	66	53				
15 - 16	66	51	49				
16 - 17	52	60	51				
17 - 18	55	57	73				
18 - 19	37	39	25				
19 - 20	35	32	20				
20 - 21	24	16	25				
21 - 22	10	15	17				
22 - 23	5	5	12				
23 - 24	5	7	2				
Day Total	614	633	616				

15-Minute Volumes

Time Start	Tue	Wed	Thu				
	Oct 29	Oct 30	Oct 31				
0:00	0	1	1				
0:15	1	0	0				
0:30	0	2	0				
0:45	0	0	0				
1:00	0	0	1				
1:15	0	0	0				
1:30	0	0	1				
1:45	0	0	1				
2:00	0	0	0				
2:15	0	0	1				
2:30	0	1	0				
2:45	0	0	0				
3:00	0	0	1				
3:15	0	0	0				
3:30	1	0	0				
3:45	0	0	0				
4:00	0	0	0				
4:15	0	0	1				
4:30	1	0	0				
4:45	0	0	0				
5:00	0	3	1				
5:15	2	0	0				
5:30	0	0	0				
5:45	2	1	1				
6:00	1	2	3				
6:15	1	0	1				
6:30	1	2	1				
6:45	7	3	2				
7:00	2	2	5				
7:15	5	3	6				
7:30	7	4	6				
7:45	8	10	10				
8:00	20	24	31				
8:15	28	32	26				
8:30	15	17	18				
8:45	9	10	13				
9:00	6	6	7				
9:15	8	5	8				
9:30	10	6	11				
9:45	7	6	4				
10:00	8	6	13				
10:15	11	8	5				
10:30	4	11	6				
10:45	8	4	5				
11:00	10	7	5				
11:15	9	10	11				
11:30	6	10	5				
11:45	7	7	7				
12:00	3	17	9				
12:15	11	9	10				
12:30	6	7	10				
12:45	7	7	4				
13:00	7	9	8				
13:15	11	9	10				
13:30	11	12	5				
13:45	7	12	15				
14:00	16	13	9				
14:15	23	23	19				
14:30	5	10	12				
14:45	13	20	13				
15:00	20	12	15				
15:15	20	11	12				
15:30	15	9	15				
15:45	11	19	7				
16:00	15	17	13				
16:15	14	10	9				
16:30	15	19	18				
16:45	8	14	11				
17:00	18	14	19				
17:15	11	13	17				
17:30	10	11	22				
17:45	16	19	15				
18:00	8	8	7				
18:15	7	10	6				
18:30	11	12	6				
18:45	11	9	6				
19:00	7	8	2				
19:15	6	11	3				
19:30	12	6	4				
19:45	10	7	11				
20:00	3	2	9				
20:15	11	3	7				
20:30	5	4	5				
20:45	5	7	4				
21:00	6	5	5				
21:15	1	5	3				
21:30	3	1	4				
21:45	0	4	5				
22:00	2	3	7				
22:15	0	1	3				
22:30	1	0	1				
22:45	2	1	1				
23:00	2	2	1				
23:15	2	0	1				
23:30	0	3	0				
23:45	1	2	0				



Site notes:

Vehicle Speed Summary

Saanich Engineering Department

Count Id: [R0737-02](#)

Filename: [McBriar Ave between Quadra St and Morris Dr-Oct-2019.xlsm](#)

Location: McBriar Ave between Quadra St and Morris Dr

Note:

Direction: **East-West**

Dates: **October 28, 2019 To November 01, 2019**

Filtered data

AVG. SPEED	19 mph	31 km/h
50 % SPEED	19 mph	31 km/h
85 % SPEED	23 mph	37 km/h
95 % SPEED	25 mph	41 km/h

Location Map



McBriar Ave between Quadra St and Morris Dr

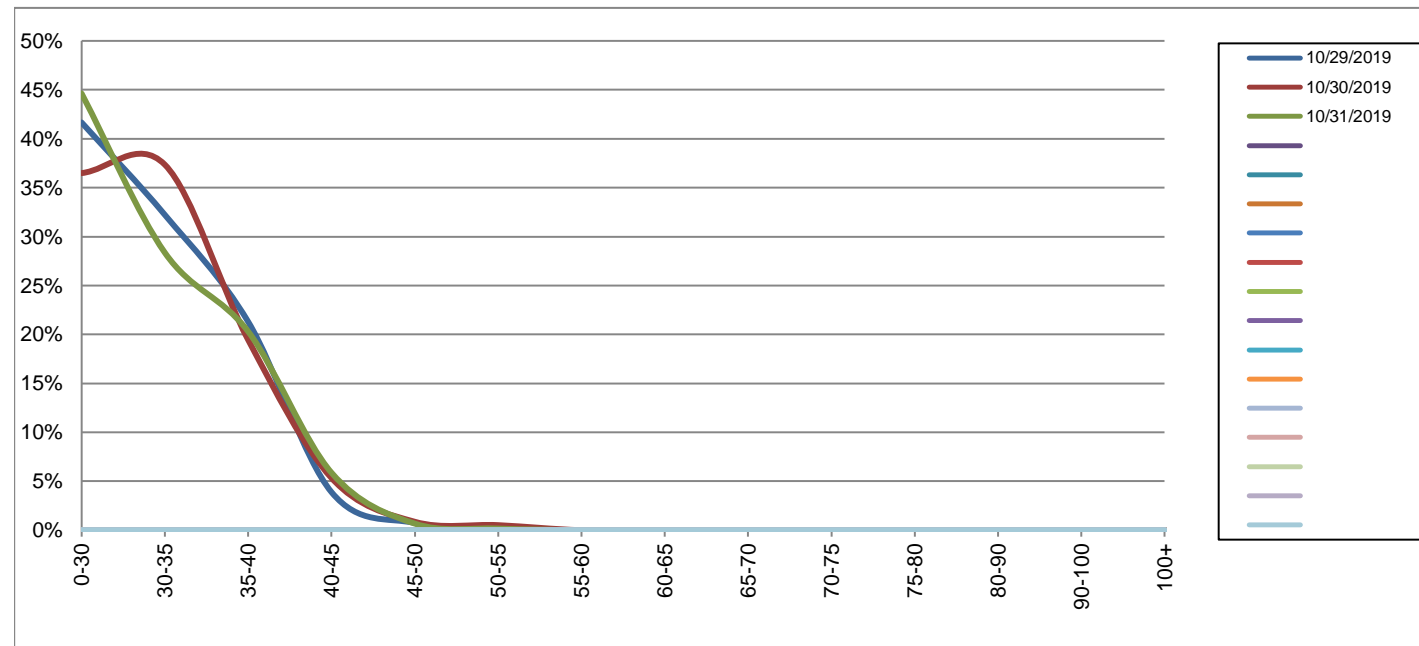
Westbound

October 29, 2019 to October 31, 2019

Daily Speed Bin Percentages															Daily Speed Bin Volumes														Total	Avg.
Bin #	1	2	3	4	5	6	7	8	9	10	11	12	13	14	1	2	3	4	5	6	7	8	9	10	11	12	13	14	Volume	Speed
Bin Speeds	0-30	30-35	35-40	40-45	45-50	50-55	55-60	60-65	65-70	70-75	75-80	80-90	90-100	100+	0-30	30-35	35-40	40-45	45-50	50-55	55-60	60-65	65-70	70-75	75-80	80-90	90-100	100+		
10/29/2019	41.7%	32.2%	21.3%	3.9%	0.7%	0.2%	0.0%	0.0%	0.0%	0.0%	0.0%	0.0%	0.0%	0.0%	225	174	115	21	4	1	0	0	0	0	0	0	0	0	540	27
10/30/2019	36.5%	37.3%	19.4%	5.3%	0.9%	0.5%	0.0%	0.0%	0.0%	0.0%	0.0%	0.0%	0.0%	0.0%	212	217	113	31	5	3	0	0	0	0	0	0	0	0	581	28
10/31/2019	44.6%	28.4%	20.3%	5.9%	0.7%	0.2%	0.0%	0.0%	0.0%	0.0%	0.0%	0.0%	0.0%	0.0%	266	169	121	35	4	1	0	0	0	0	0	0	0	0	596	26
Total	40.9%	32.6%	20.3%	5.1%	0.8%	0.3%	0.0%	0.0%	0.0%	0.0%	0.0%	0.0%	0.0%	0.0%	703	560	349	87	13	5	0	0	0	0	0	0	0	1717	27	

Speed Data Summary

Bin #	1	2	3	4	5	6	7	8	9	10	11	12	13	14	Total
Bin Speeds	0-30	30-35	35-40	40-45	45-50	50-55	55-60	60-65	65-70	70-75	75-80	80-90	90-100	100+	
Survey Total	703	560	349	87	13	5	0	0	0	0	0	0	0	0	1717
% Total	40.9%	32.6%	20.3%	5.1%	0.8%	0.3%	0.0%	0.0%	0.0%	0.0%	0.0%	0.0%	0.0%	0.0%	100%
Accumulated %	40.9%	73.6%	93.9%	99.0%	99.7%	100.0%	100.0%	100.0%	100.0%	100.0%	100.0%	100.0%	100.0%	100.0%	
Inverse Accum. %	59.1%	26.4%	6.1%	1.0%	0.3%	0.0%	0.0%	0.0%	0.0%	0.0%	0.0%	0.0%	0.0%	0.0%	
Average Speed	27 KM/H														



Site notes:

McBriar Ave between Quadra St and Morris Dr

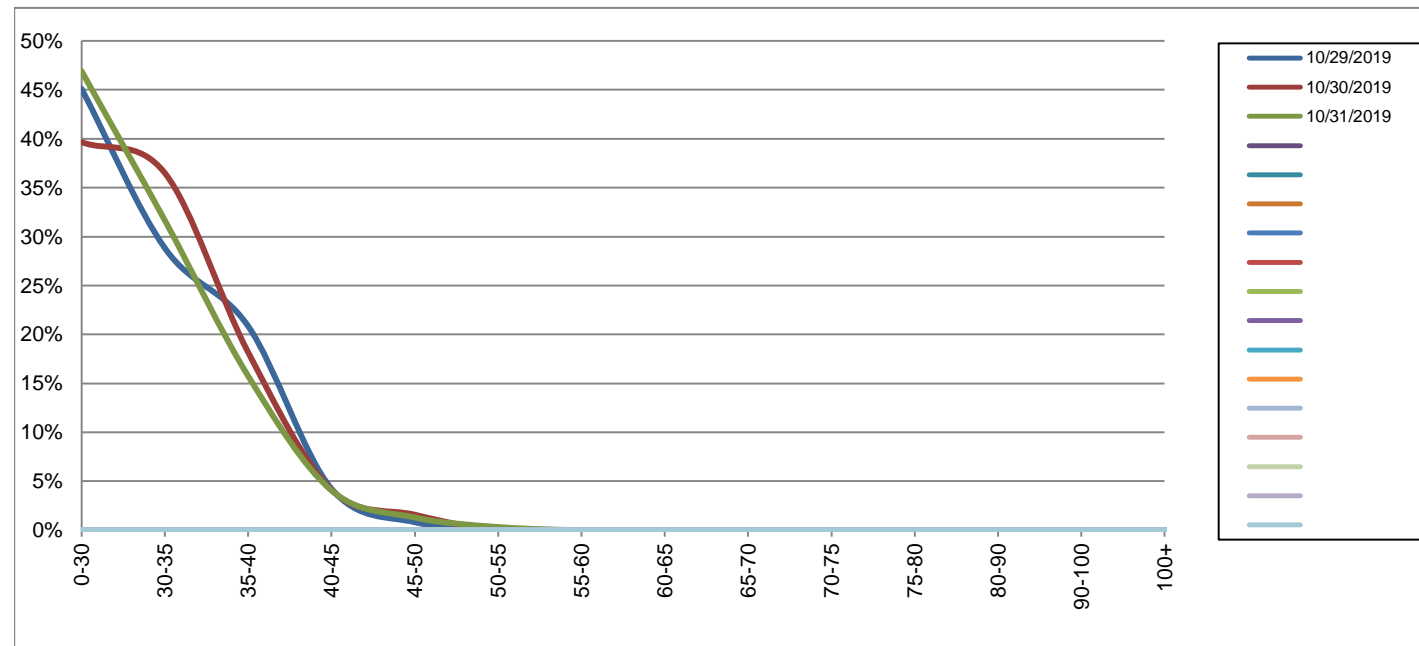
Eastbound

October 29, 2019 to October 31, 2019

Daily Speed Bin Percentages															Daily Speed Bin Volumes														Total	Avg.
Bin #	1	2	3	4	5	6	7	8	9	10	11	12	13	14	1	2	3	4	5	6	7	8	9	10	11	12	13	14	Volume	Speed
Bin Speeds	0-30	30-35	35-40	40-45	45-50	50-55	55-60	60-65	65-70	70-75	75-80	80-90	90-100	100+	0-30	30-35	35-40	40-45	45-50	50-55	55-60	60-65	65-70	70-75	75-80	80-90	90-100	100+		
10/29/2019	45.1%	28.8%	20.8%	4.2%	0.8%	0.2%	0.0%	0.0%	0.0%	0.0%	0.0%	0.0%	0.0%	0.0%	277	177	128	26	5	1	0	0	0	0	0	0	0	0	614	26
10/30/2019	39.7%	36.5%	18.2%	4.1%	1.6%	0.0%	0.0%	0.0%	0.0%	0.0%	0.0%	0.0%	0.0%	0.0%	251	231	115	26	10	0	0	0	0	0	0	0	0	0	633	27
10/31/2019	46.9%	31.7%	15.7%	4.1%	1.3%	0.3%	0.0%	0.0%	0.0%	0.0%	0.0%	0.0%	0.0%	0.0%	289	195	97	25	8	2	0	0	0	0	0	0	0	0	616	26
Total	43.9%	32.4%	18.3%	4.1%	1.2%	0.2%	0.0%	0.0%	0.0%	0.0%	0.0%	0.0%	0.0%	0.0%	817	603	340	77	23	3	0	0	0	0	0	0	0	1863	26	

Speed Data Summary

Bin #	1	2	3	4	5	6	7	8	9	10	11	12	13	14	Total
Bin Speeds	0-30	30-35	35-40	40-45	45-50	50-55	55-60	60-65	65-70	70-75	75-80	80-90	90-100	100+	
Survey Total	817	603	340	77	23	3	0	0	0	0	0	0	0	0	1863
% Total	43.9%	32.4%	18.3%	4.1%	1.2%	0.2%	0.0%	0.0%	0.0%	0.0%	0.0%	0.0%	0.0%	0.0%	100%
Accumulated %	43.9%	76.2%	94.5%	98.6%	99.8%	100.0%	100.0%	100.0%	100.0%	100.0%	100.0%	100.0%	100.0%	100.0%	
Inverse Accum. %	56.1%	23.8%	5.5%	1.4%	0.2%	0.0%	0.0%	0.0%	0.0%	0.0%	0.0%	0.0%	0.0%	0.0%	
Average Speed	26 KM/H														



Site notes:

McBriar Ave between Quadra St and Morris Dr

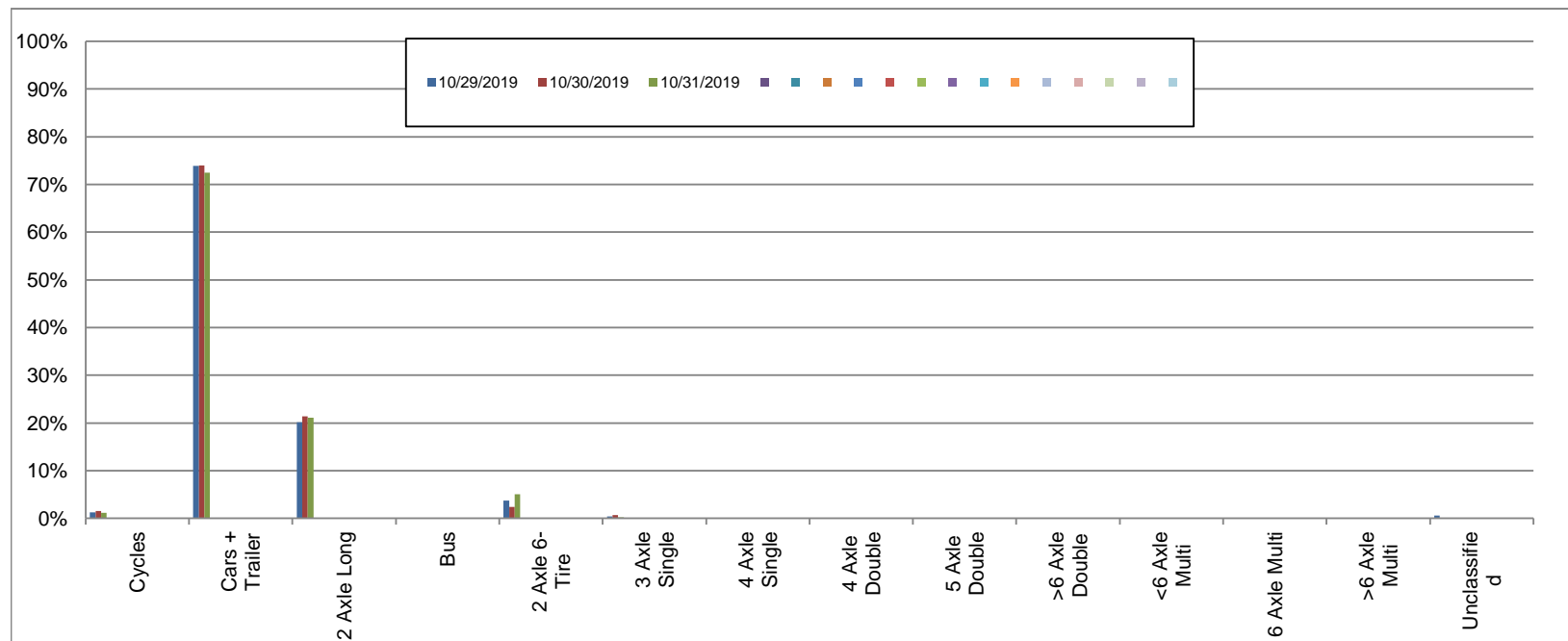
Westbound

October 29, 2019 to October 31, 2019

Daily Class Bin Percentages															Daily Class Bin Volumes															
Bin #	1	2	3	4	5	6	7	8	9	10	11	12	13	14	1	2	3	4	5	6	7	8	9	10	11	12	13	14	Total Volume	
Bin Class	Cycles	Cars + Trailer	2 Axle Long	Bus	2 Axle 6-Tire	3 Axle Single	4 Axle Single	4 Axle Double	5 Axle Double	>6 Axle Double	<6 Axle Multi	6 Axle Multi	>6 Axle Multi	Unclassified	Cycles	Cars + Trailer	2 Axle Long	Bus	2 Axle 6-Tire	3 Axle Single	4 Axle Single	4 Axle Double	5 Axle Double	>6 Axle Double	<6 Axle Multi	6 Axle Multi	>6 Axle Multi	Unclassified		
10/29/2019	1.3%	73.9%	20.2%	0.0%	3.7%	0.4%	0.0%	0.0%	0.0%	0.0%	0.0%	0.0%	0.0%	0.6%	7	399	109	0	20	2	0	0	0	0	0	0	0	0	3	540
10/30/2019	1.5%	74.0%	21.3%	0.0%	2.4%	0.7%	0.0%	0.0%	0.0%	0.0%	0.0%	0.0%	0.0%	0.0%	9	430	124	0	14	4	0	0	0	0	0	0	0	0	0	581
10/31/2019	1.2%	72.5%	21.1%	0.0%	5.0%	0.2%	0.0%	0.0%	0.0%	0.0%	0.0%	0.0%	0.0%	0.0%	7	432	126	0	30	1	0	0	0	0	0	0	0	0	0	596
Total	1.3%	73.4%	20.9%	0.0%	3.7%	0.4%	0.0%	0.0%	0.0%	0.0%	0.0%	0.0%	0.0%	0.2%	23	1261	359	0	64	7	0	0	0	0	0	0	0	3	1717	

Class Data Summary

Bin #	1	2	3	4	5	6	7	8	9	10	11	12	13	14	Total Volume
Bin Class	Cycles	Cars + Trailer	2 Axle Long	Bus	2 Axle 6-Tire	3 Axle Single	4 Axle Single	4 Axle Double	5 Axle Double	>6 Axle Double	<6 Axle Multi	6 Axle Multi	>6 Axle Multi	Unclassified	Total Volume
Survey Total	23	1261	359	0	64	7	0	0	0	0	0	0	0	3	1717
% Total	1.3%	73.4%	20.9%	0.0%	3.7%	0.4%	0.0%	0.0%	0.0%	0.0%	0.0%	0.0%	0.0%	0.2%	100%
Accumulated %	1.3%	74.8%	95.7%	95.7%	99.4%	99.8%	99.8%	99.8%	99.8%	99.8%	99.8%	99.8%	99.8%	100.0%	
Inv. Accum. %	98.7%	25.2%	4.3%	4.3%	0.6%	0.2%	0.2%	0.2%	0.2%	0.2%	0.2%	0.2%	0.2%	0.0%	



Classification Descriptions

Bin #	Bin Description
1	Motorcycles
2	Passenger cars, including those with recreational trailers
3	2-axle pick-ups, vans, and RVs, including those with recreational trailers
4	Buses
5	2-axle, 6-tire single units
6	3-axle single units
7	4-axle single units
8	3-axle or 4-axle double unit
9	5-axle double unit
10	6-, 7-, or 8-axle double unit
11	5-axle multiple unit
12	6-axle multiple unit
13	7-or-more-axle multiple unit
14	Vehicles that could not be classified

Site notes:

McBriar Ave between Quadra St and Morris Dr

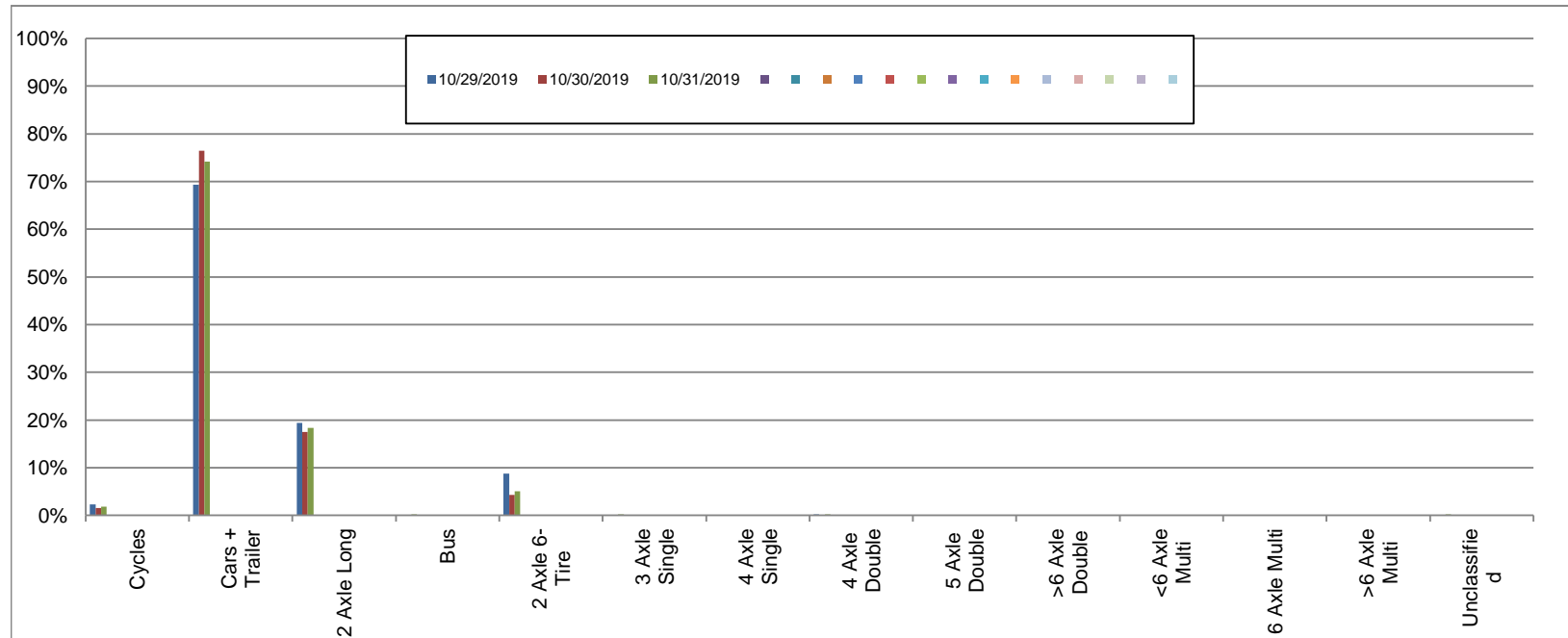
Eastbound

October 29, 2019 to October 31, 2019

Daily Class Bin Percentages															Daily Class Bin Volumes														
Bin #	1	2	3	4	5	6	7	8	9	10	11	12	13	14	1	2	3	4	5	6	7	8	9	10	11	12	13	14	Total Volume
Bin Class	Cycles	Cars + Trailer	2 Axle Long	Bus	2 Axle 6-Tire	3 Axle Single	4 Axle Single	4 Axle Double	5 Axle Double	>6 Axle Double	<6 Axle Multi	6 Axle Multi	>6 Axle Multi	Unclassified	Cycles	Cars + Trailer	2 Axle Long	Bus	2 Axle 6-Tire	3 Axle Single	4 Axle Single	4 Axle Double	5 Axle Double	>6 Axle Double	<6 Axle Multi	6 Axle Multi	>6 Axle Multi	Unclassified	
10/29/2019	2.3%	69.4%	19.4%	0.0%	8.8%	0.0%	0.0%	0.2%	0.0%	0.0%	0.0%	0.0%	0.0%	0.0%	14	426	119	0	54	0	0	1	0	0	0	0	0	0	614
10/30/2019	1.6%	76.5%	17.5%	0.0%	4.3%	0.2%	0.0%	0.0%	0.0%	0.0%	0.0%	0.0%	0.0%	0.0%	10	484	111	0	27	1	0	0	0	0	0	0	0	0	633
10/31/2019	1.8%	74.2%	18.3%	0.2%	5.0%	0.2%	0.0%	0.2%	0.0%	0.0%	0.0%	0.0%	0.0%	0.2%	11	457	113	1	31	1	0	1	0	0	0	0	0	1	616
Total	1.9%	73.4%	18.4%	0.1%	6.0%	0.1%	0.0%	0.1%	0.0%	0.0%	0.0%	0.0%	0.0%	0.1%	35	1367	343	1	112	2	0	2	0	0	0	0	0	1	1863

Class Data Summary

Bin #	1	2	3	4	5	6	7	8	9	10	11	12	13	14	Total Volume
Bin Class	Cycles	Cars + Trailer	2 Axle Long	Bus	2 Axle 6-Tire	3 Axle Single	4 Axle Single	4 Axle Double	5 Axle Double	>6 Axle Double	<6 Axle Multi	6 Axle Multi	>6 Axle Multi	Unclassified	Total Volume
Survey Total	35	1367	343	1	112	2	0	2	0	0	0	0	0	1	1863
% Total	1.9%	73.4%	18.4%	0.1%	6.0%	0.1%	0.0%	0.1%	0.0%	0.0%	0.0%	0.0%	0.0%	0.1%	100%
Accumulated %	1.9%	75.3%	93.7%	93.7%	99.7%	99.8%	99.8%	99.9%	99.9%	99.9%	99.9%	99.9%	99.9%	100.0%	
Inv. Accum. %	98.1%	24.7%	6.3%	6.3%	0.3%	0.2%	0.2%	0.1%	0.1%	0.1%	0.1%	0.1%	0.1%	0.0%	



Classification Descriptions

Bin #	Bin Description
1	Motorcycles
2	Passenger cars, including those with recreational trailers
3	2-axle pick-ups, vans, and RVs, including those with recreational trailers
4	Buses
5	2-axle, 6-tire single units
6	3-axle single units
7	4-axle single units
8	3-axle or 4-axle double unit
9	5-axle double unit
10	6-, 7-, or 8-axle double unit
11	5-axle multiple unit
12	6-axle multiple unit
13	7-or-more-axle multiple unit
14	Vehicles that could not be classified

Site notes: